

Site Data

Total Gross Site Area 9.02 Ac.
 Existing Land Use Designation Commercial Recreation Within A Dashed Line Area
 Existing Zoning District Designation Residential Irregular (9)
 Proposed Zoning District Designation Open Space & Recreational - S-1
 Commercial Recreation - C.R.

BY	REVISIONS	DATE

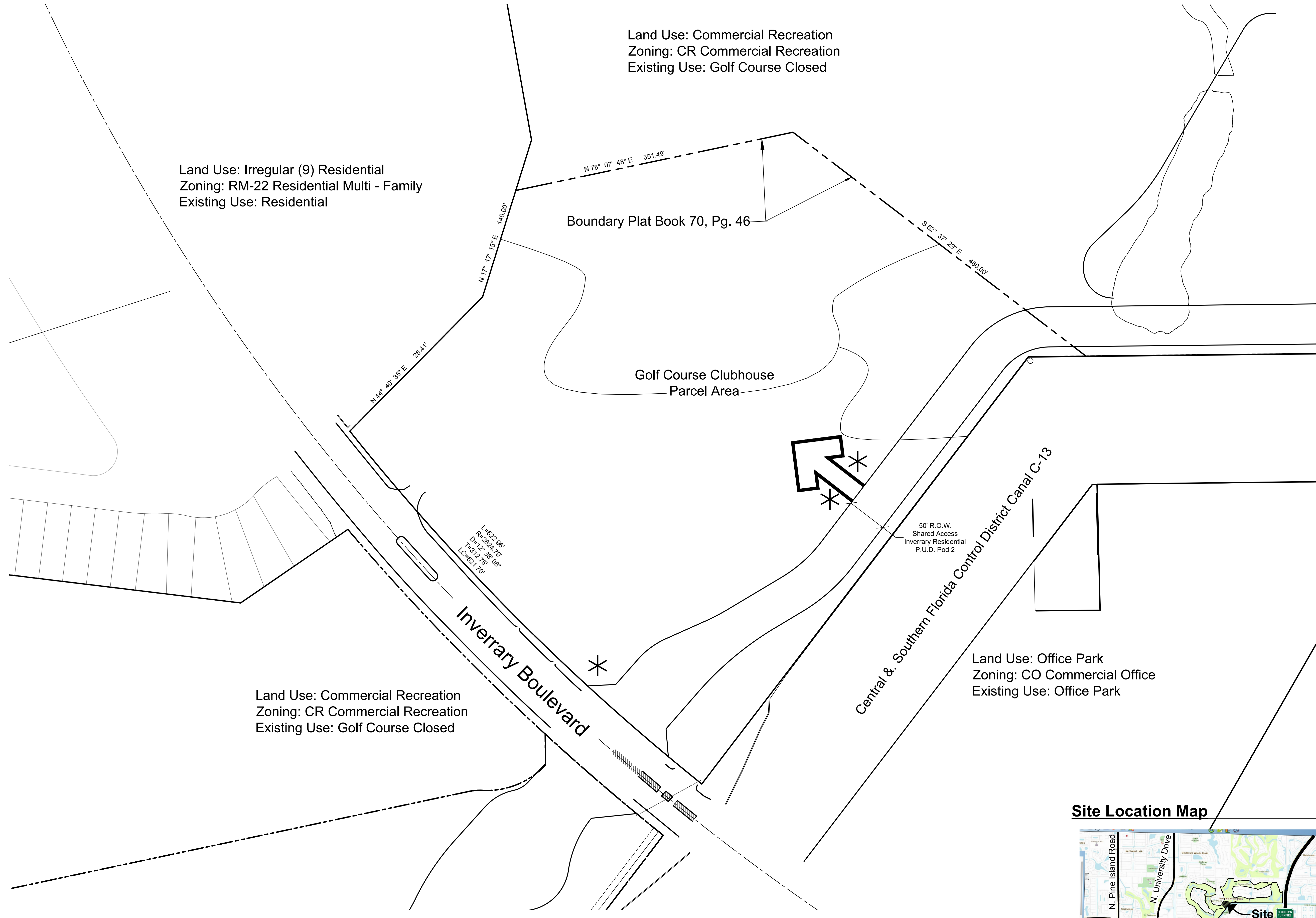
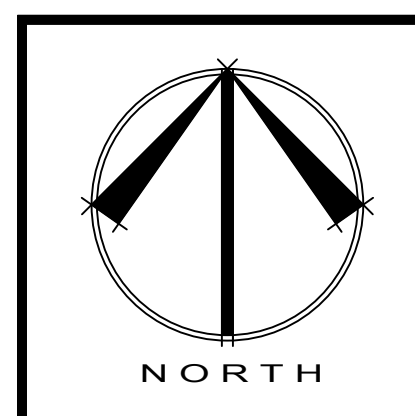
Design and Entitlement Consultants, LLC.
 1127 Royal Palm Beach Blvd., Unit 411
 Royal Palm Beach, FL 33411
 Tel: (561) 707-3410
 Email: info@designandentitlement.com



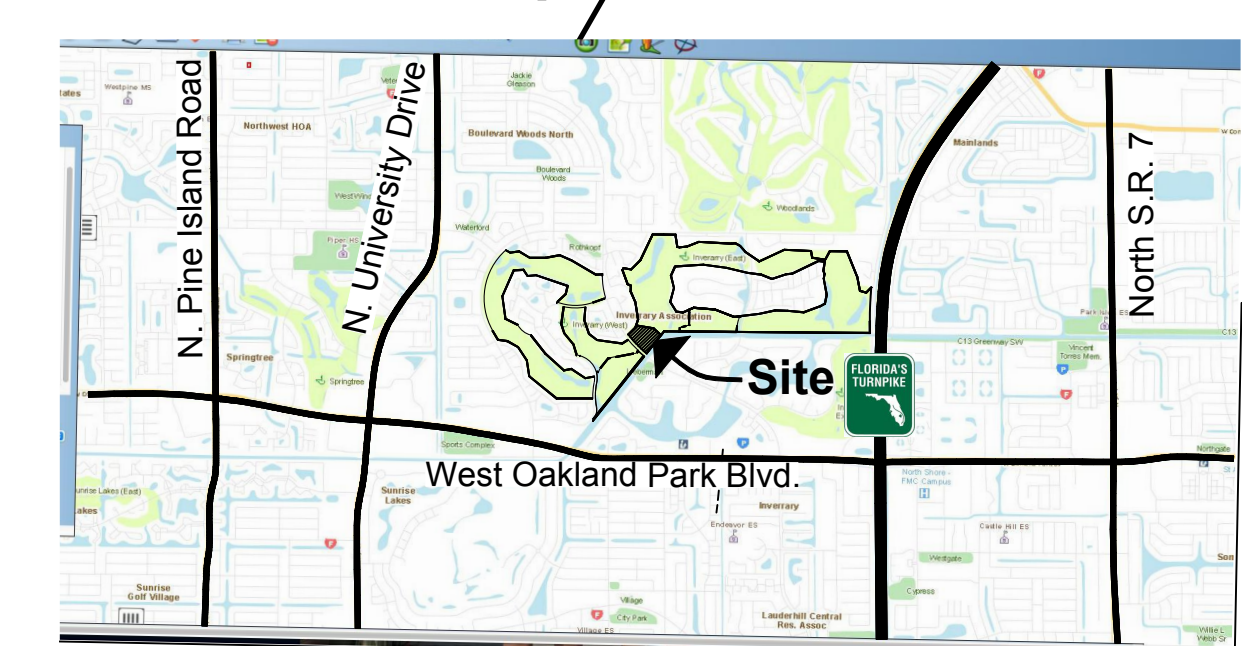
Inverrary Golf Course Clubhouse
 Pulte Home Company, LLC.
 Inverrary Boulevard
 Lauderhill, Florida 33319

Overall Conceptual Site Plan

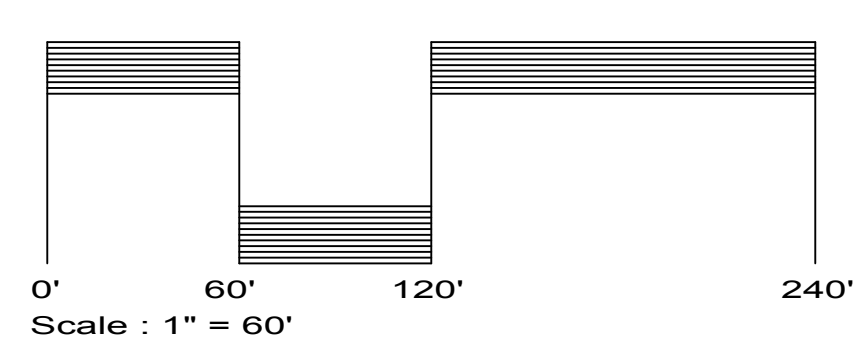
SCALE: 1"=60'
 CHECKED BY: K.D.D.
 DRAWN BY: K.D.D.
 DATE: 04.15.26
 FILE: SP.1
 SHEET
MSP.1
 16 OF 26 SHEETS



Site Location Map



N.T.S.



Legend

Project Notes

- * - Sign Location.
- AC. = Acres
- DE = Drainage Easement
- Eas. = Easement
- LME = Lake Maintenance Easement
- NTS = Not To Scale
- ORB = Official Record Book
- OS = Open Space
- PB = Plat Book
- RAS = Residential Access Street
- ROW = Right of Way
- UE. = Utility Easement
- W.M.T. = Water Management Tract

- Utilities are available to the site.
- Golf Course Clubhouse to share vehicular access with proposed Inverrary Residential PUD Pod 2, to the east of the clubhouse parcel.

© 2023 THESE PLANS AND THE INFORMATION SHOWN HEREIN ARE THE PROPERTY OF DESIGN AND ENTITLEMENT CONSULTANTS, LLC AND REPRODUCTIONS, DISSEMINATIONS OR USE THEREOF IN WHOLE OR IN PART IS EXPRESSLY PROHIBITED WITHOUT WRITTEN CONSENT.