

The City of Lauderdale – Commission Meeting District 5 – Academic Updates



Dr. Jeff Holness

School Board Member, Vice Chair– District 5



Presentation Content



The City of Lauderdale District 5 Schools

Broward Estates Early Learning & Resource Center
Castle Hill ES
Endeavour Primary Learning Center
Larkdale ES
Lauderhill Paul Turner ES
Dr. Martin Luther King, Jr. ES
Royal Palm ES
Wingate Oaks Center
Parkway MS
Lauderhill 6-12

Agenda

Overview of District-Wide Academic Success

District 5 Academic Highlights

Academic Success in Lauderdale

Academic Implementation Timeline

Broward Estates Early Learning & Resource Center

Estimated 2025-26 Revenue & Cost Impacts

WE DID IT AGAIN!



- For the **second year** in a row, BCPS earned an **A** rating!
- The number of C-rated schools **were reduced by half** – from 70 in 2023/24 to 34 in 2024/25
- The District reported **NO** D or F rated schools

WE DID IT AGAIN!

- **More than half** of BCPS-operated schools are now A-rated
- Out of the five largest school districts in Florida, BCPS is **one of two with no D or F-rated schools**

84%

of our schools received
A or B grades!



8

schools went from
a C to an A!



5

schools earned their
first A ever!



District 5 Highlights

District 5 Schools: Improved from a "C" to an "A"



Horizon
Elementary
School



Rock Island
Elementary
School



Sunland Park
Academy

District 5 Schools: Received Their First "A" Grade EVER!



Oriole
Elementary
School



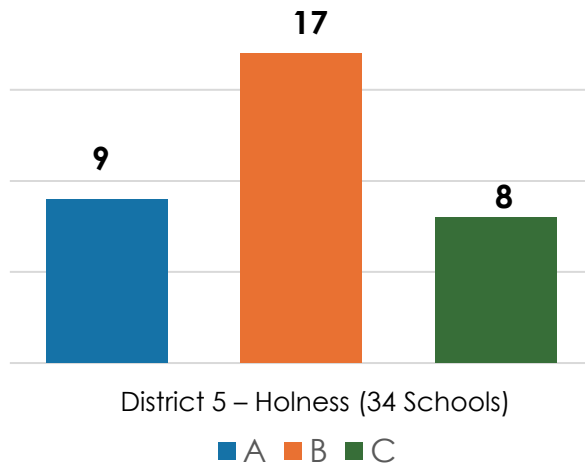
Plantation
Elementary
School



Boyd
Anderson High
School

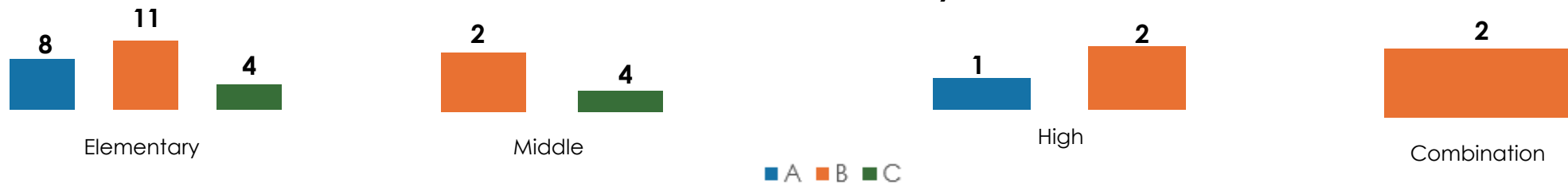
District 5 Highlights

2025 School Grades



- Three schools increased by two letter grades
- Eleven schools increased by one letter grade
- Eighteen schools maintained the same letter grade from 2024

2025 School Grades by Level



Academic Success in Lauderdale

School	24/25	23/24	22/23
Broward Estates ES	C	C	D
Castle Hill ES	C	C	D
Endeavour Primary Learning Center	A	A	B
Larkdale ES	B	B	C
Lauderhill Paul Turner ES	B	B	C
Dr. Martin Luther King, Jr. ES	B	C	C
Royal Palm ES	C	C	C
Parkway MS	C	C	C
Lauderhill 6-12	B	B	B

Key Highlights

- Broward Estates and Castle Hill have maintained their C rating for two consecutive years
- Endeavour Primary has maintained an A rating for two years in a row
- For two consecutive years, Larkdale and Lauderdale Paul Turner has held a B rating
- Big Gains at Dr. MLK Jr., from a C to a B in one year
- Royal Palm and Parkway has sustained a C rating for three consecutive years, demonstrating consistent student learning gains and increases in percentage points
- Lauderdale 6–12 has proudly maintained a B rating for three straight years

Targeted Focus: Improve All Subgroups (Blacks, SWD, and ELL) Performance

- Pedagogically-Based Professional Learning
- Acceleration Audits
- Quarterly Progress Monitoring
- Parent and Community Engagement

Academic Implementation Timeline



- **July/August 2025**
 - Targeted Intervention in ELA, Math, and Science. Diagnostic Assessments (FAST PM 1)
- **October/November 2025**
 - Review 2024-2025 student data & adjust instructional plans.
 - Professional Developments
 - Ensure vendors are in alignment with appropriate enrichment or interventions based on gaps identified
 - Quarterly Data Review Check-Ins – Targeted coaching
- **December 2025/January 2026**
 - FAST PM2 mid-year review – Adjust interventions based on performance
- **February/March 2026**
 - Spring Instructional walk-throughs focused on ELA, Math, and Science with fidelity
- **April/May 2026**
 - FAST PM3 analysis & School Improvement Plan updates
 - Data-informed Summer acceleration planning
- **June 2026**
 - Comprehensive data review & strategic adjustments for 2026-2027





BROWARD ESTATES EARLY LEARNING AND RESOURCE CENTER

A Place to Learn. A Place to Grow. For Everyone!



Programs Offered:

Early Head Start, Head Start, VPK, and Pre-K ESE.

School Hours:

8:00 AM – 2:00 PM

Classes Begin:

August 11, 2025

Registration:

Monday – Friday
Starting at 7:30 AM





BROWARD ESTATES EARLY LEARNING AND RESOURCE CENTER



A Place to Learn. A Place to Grow. For Everyone!

McFatter Technical College

Health Occupations

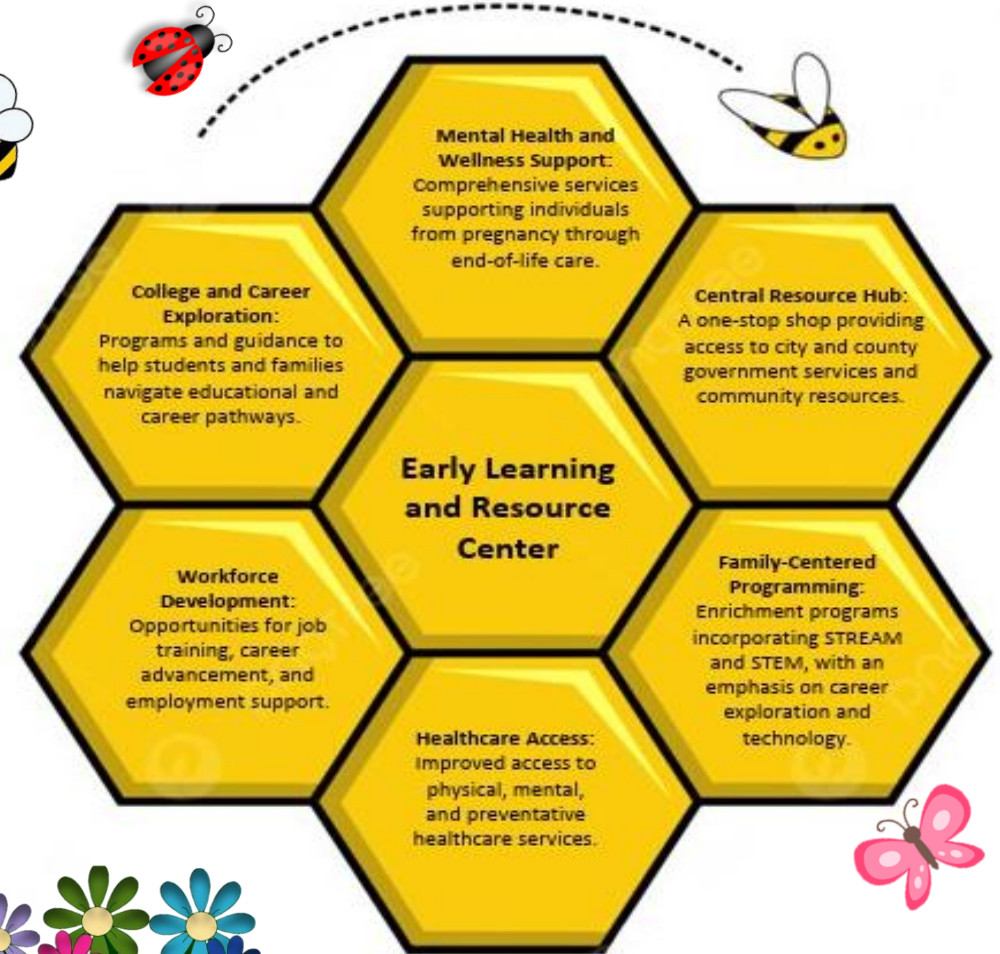
Community Schools NORTH

English for Speakers of Other Language (ESOL)
GED

General Education Development (GED)

Partners and Services

Programs operating on campus serving the community

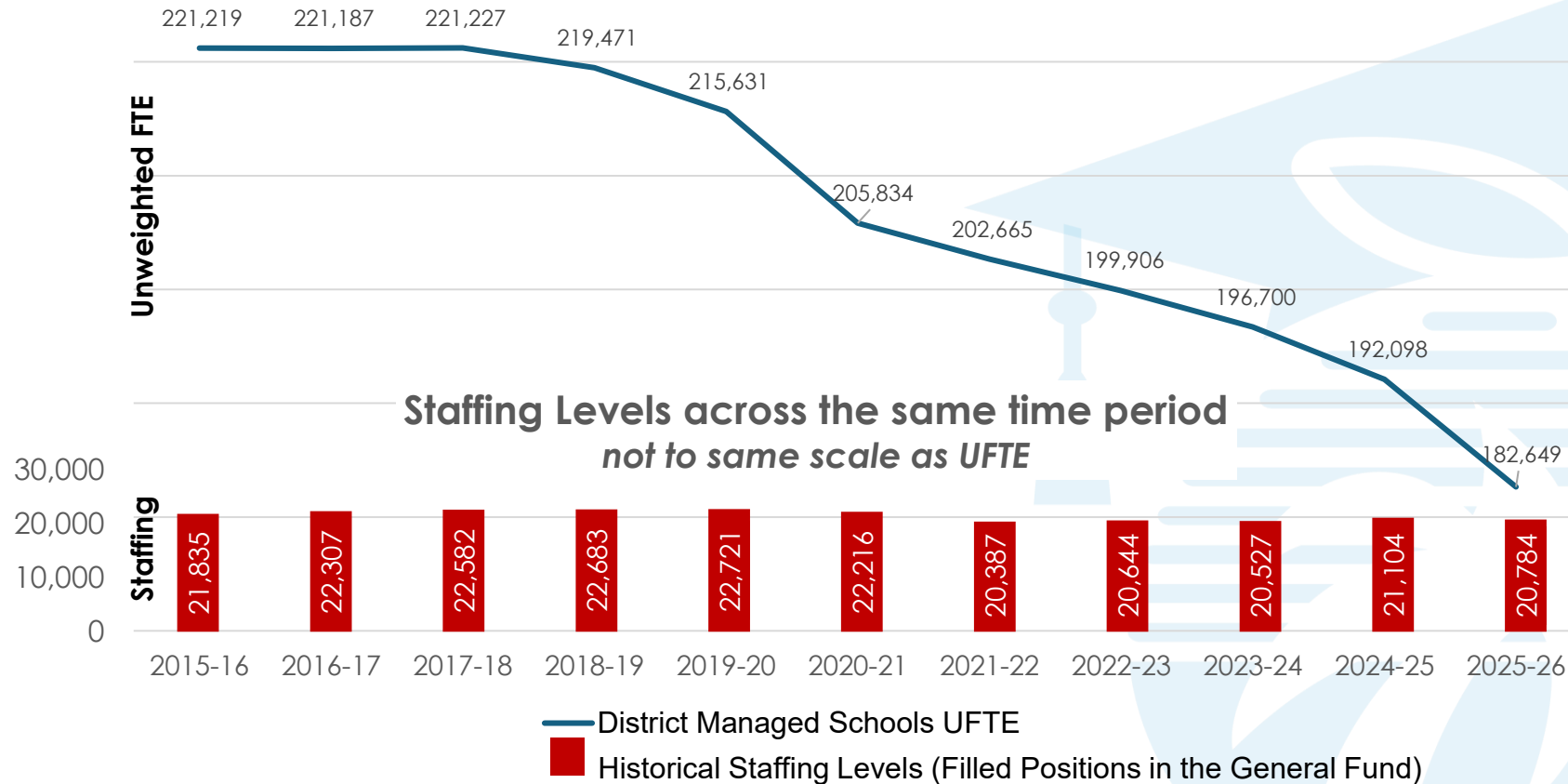


Estimated 2025-26 Revenue & Cost Impacts

Revenue Decrease (in millions)	Amount
Revenue Decrease from Projected FTE Loss 2nd Calc v/s Projection (6,847 FTE Loss x \$9,065 funding per FTE)	\$ (62.1)
Potential 3rd Calc Additional FTE Loss (2,361 3,600 x \$9,065)	\$ (32.6)
Total Estimated Revenue Decrease	\$ (94.7)
Description (in millions)	Amount
Teacher Salaries Increase Net of Charter Schools and FES (funded by the FEFP Salary Increase Allocation)	\$ 5.2
Debt Service for Energy Lease expense increase	3.2
2018 Referendum Charter Schools Settlement: Interest Payment Increase	4.6
Textbook Adoption	31.0
Fringe Costs (health insurance, retirement, etc.) as compared to the 2024-25 Adopted Budget	34.0
Total Estimated Cost Increases	\$ 78.0
Net Negative Impact on District Funding from Revenue Decrease and Cost Increases	\$ (172.7)

Staffing Level and Enrollment Trend

Enrollment shown as Unweighted-FTE (UFTE)



2025-26 Actual UFTE is as of 8/28/25

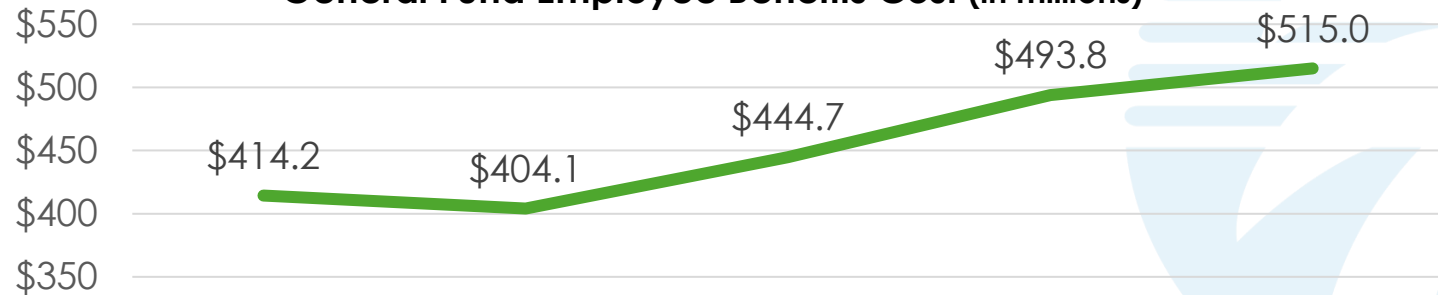
Enrollment, Base Allocation, Revenue, and Benefits Cost Trends (General Fund)

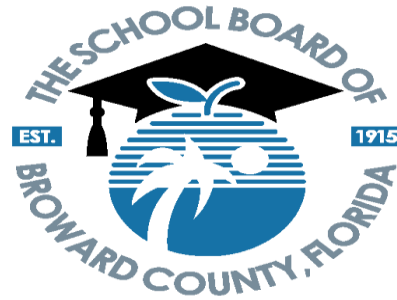
UFTE & Base Allocation	FY21	FY22	FY23	FY24	FY25	FY26
District Student UFTE	205,834	202,665	199,906	196,700	192,098	182,649
Difference	---	(3,169)	(2,795)	(3,206)	(4,602)	(9,449)
Revenue per UFTE	\$7,986	\$7,799	\$8,201	\$8,638	\$8,929	\$9,065
Difference		\$(187)	\$402	\$437	\$291	\$136

Revenue (in millions)

Source	FY21 (actual)	FY22 (actual)	FY23 (actual)	FY24 (actual)	FY25 (actual)	FY26 (est.)
General Fund	\$1,949.5	\$1,894.9	\$2,025.8	\$2,132.9	\$2,214.5	\$1,932.6
Referendum	107.3	112.4	127.0	233.0	248.1	263.0
Total	\$2,056.8	\$2,007.3	\$2,152.8	\$2,365.9	\$2,462.6	\$2,195.6

General Fund Employee Benefits Cost (in millions)





Sarah Leonardi, Chair
Dr. Jeff Holness, Vice Chair

Lori Alhadeff
Maura McCarthy Bulman
Adam Cervera, Esq.
Debra Hixon
Nora Rupert
Rebecca Thompson
Dr. Allen Zeman

Dr. Howard Hepburn
Superintendent of Schools

The School Board of Broward County, Florida, prohibits any policy or procedure which results in discrimination on the basis of age, color, disability, gender identity, gender expression, genetic information, marital status, national origin, race, religion, sex or sexual orientation. The School Board also provides equal access to the Boy Scouts and other designated youth groups. Individuals who wish to file a discrimination and/or harassment complaint may call the Director, Equal Educational Opportunities/ADA Compliance Department & District's Equity Coordinator/Title IX Coordinator at 754-321-2150 or email eeo@browardschools.com.

Individuals with disabilities requesting accommodations under the Americans with Disabilities Act Amendments Act of 2008, (ADAAA) may call Equal Educational Opportunities/ADA Compliance Department at 754-321-2150 or email eeo@browardschools.com.

browardschools.com