

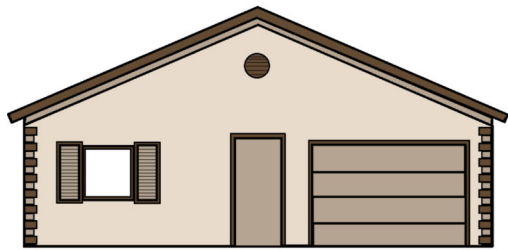
CITY OF LAUDERHILL RESIDENTIAL EXTERIOR COLOR GUIDELINES

To help you better understand when a permit or review is required before painting your home.

These guidelines are intended to make it easier for homeowners to refresh their properties using standard, neutral color schemes without requiring additional approval.

OPTION 1

All Neutral Colors

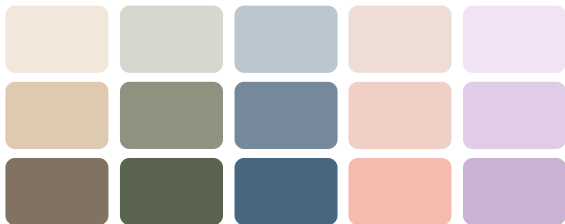


Any number of **neutral** colors may be used



NO PERMIT REQUIRED

APPROVED Neutral Color Examples



Colors shown are representative only*

OPTION 2

Neutrals + One Accent Color

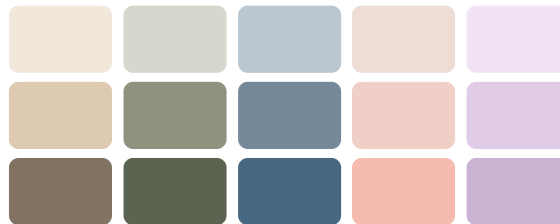


Neutral colors with **one non-neutral accent** color only



NO PERMIT REQUIRED

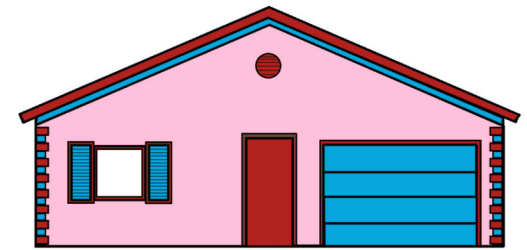
APPROVED Neutral Color Examples



Colors shown are representative only*

OPTION 3

Two or More Non-Neutral Colors



Two or more non-neutral colors used on the exterior



CAC REVIEW REQUIRED

Community Appearance Committee Review Required

Examples of Non-Neutral Colors



Colors shown are representative only*

When choosing colors, the main body color and trim/accent colors should be contrasting colors.

Questions before painting?

Planning & Zoning Division 954-730-3050 | PlanningAndZoning@Lauderhill-fl.gov

*Approved neutral and non-neutral colors are not limited to the colors shown. Final determinations are subject to the City of Lauderhill Planning & Zoning Division.