

Proposed Public Art-Wrap Over Utility Box Cabinet



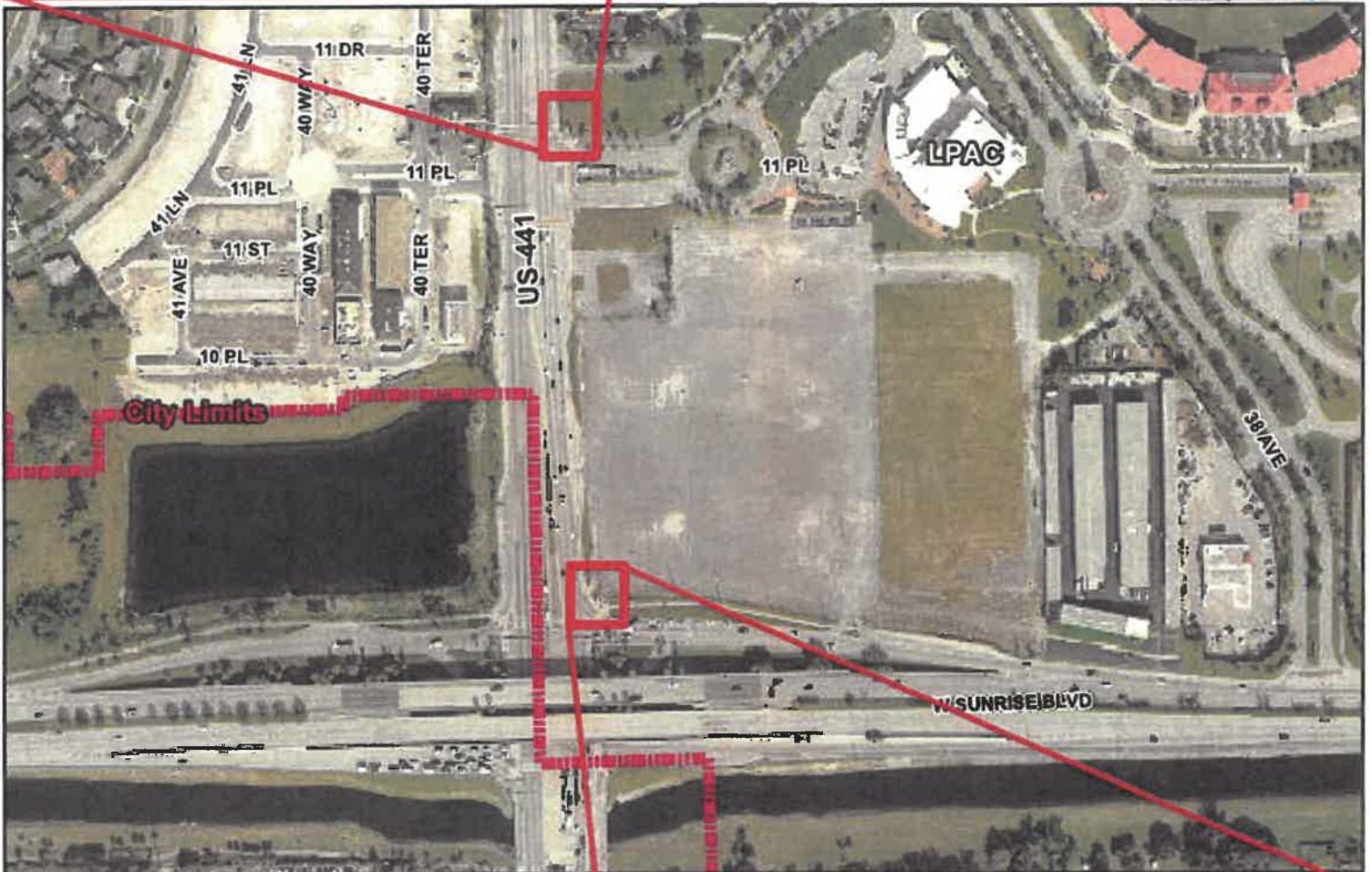
Utility Box Located on
the NE Corner of US-441
and NW 11th Place

H: 67 1/2"

W: 38"

D: 27 1/2"

Concrete base 48" x 37" x 7 1/2"



Utility Box Located on the
NE Corner of US-441
and Westbound Sunrise off ramp

H: 48"

W: 30 1/2"

D: 17"

Concrete base " 34" x 22" x 4"

