

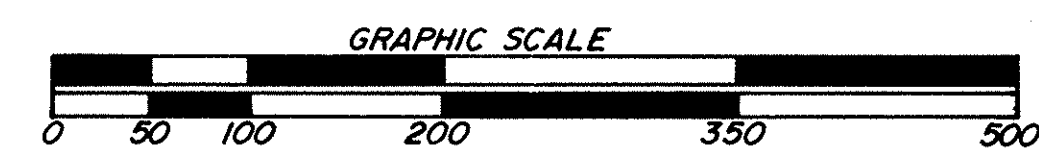
# A.T. & T. NO. 1

A PORTION OF SECTION 31,  
TOWNSHIP 49 SOUTH, RANGE 42 EAST,  
CITY OF LAUDERHILL, BROWARD COUNTY, FLORIDA.

SHEET 1 OF 1

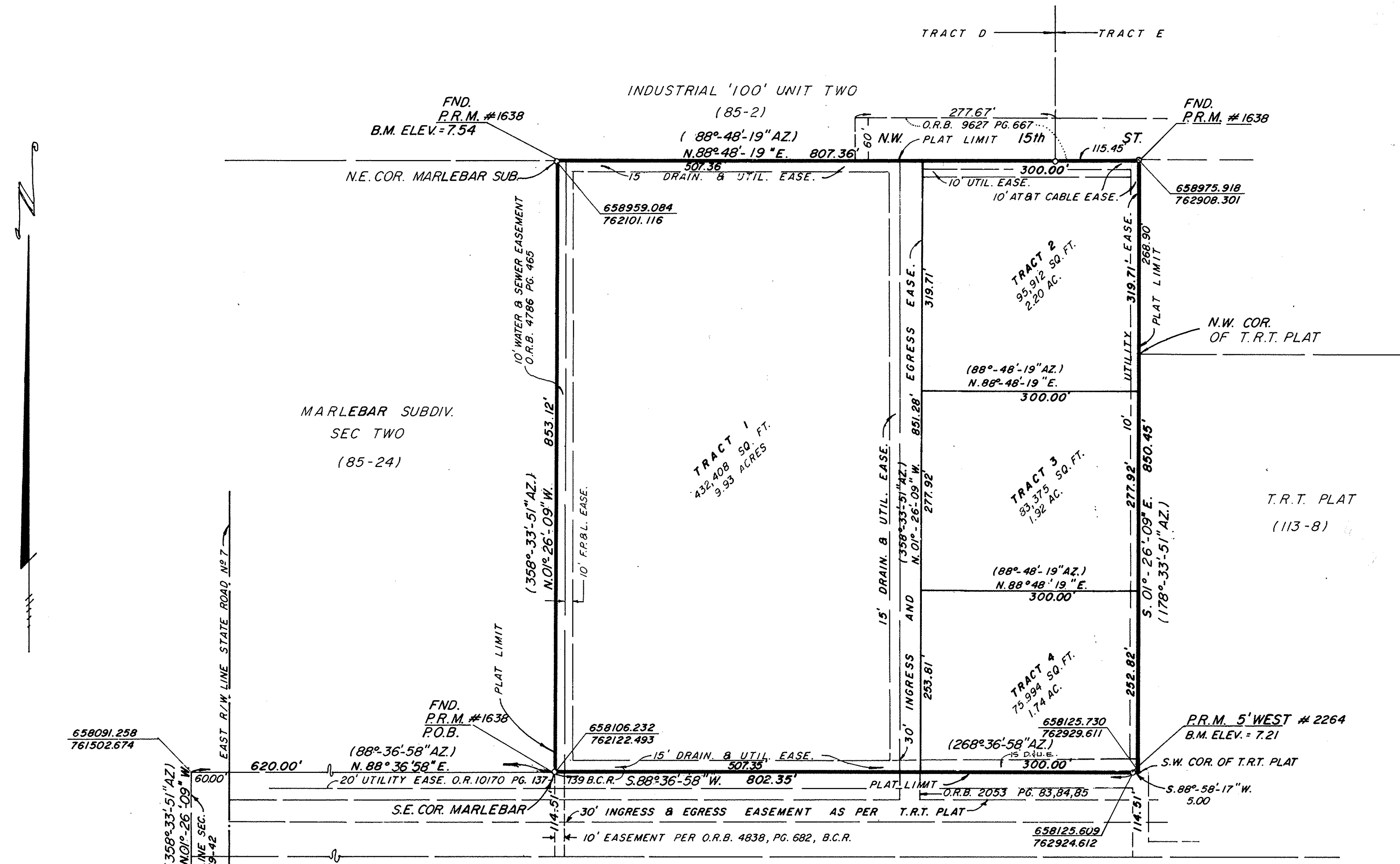
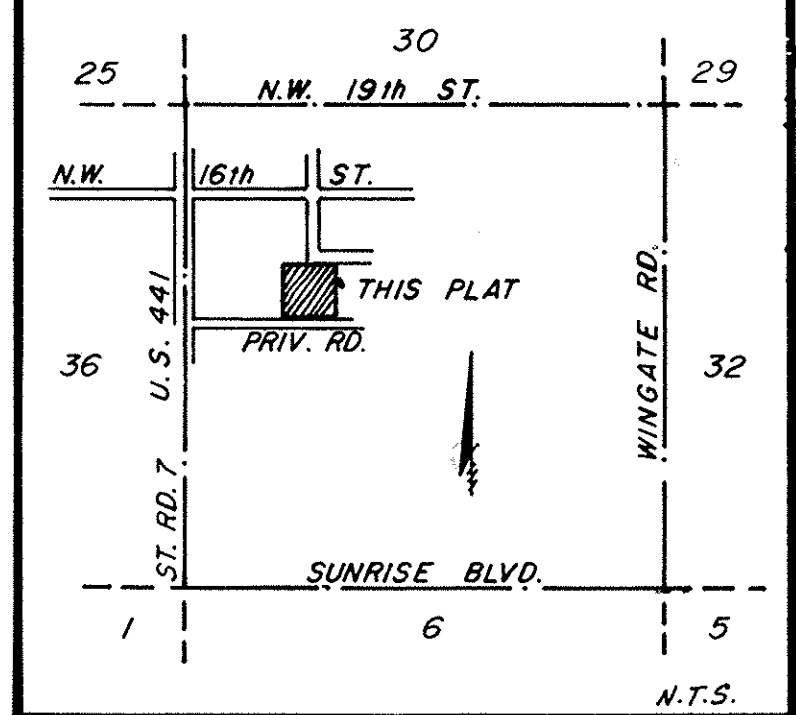
PREPARED IN THE OFFICES OF:  
STROCK ENGINEERING ASSOCIATES INC.  
DEERFIELD BEACH  
835 S.E. 8th AVE., (PALM PLAZA)  
DEERFIELD BEACH, FL. 33441

AUGUST 1985



SCALE 1"=100'

LOCATION MAP  
OF SECTION 31, TWP. 49 S. RGE. 42 E.



### LEGAL DESCRIPTION

A PARCEL OF LAND IN SECTION 31, TOWNSHIP 49 SOUTH, RANGE 42 EAST, BROWARD COUNTY, FLORIDA, BEING A PORTION OF EACH OF, GOVERNMENT LOT 2, GOVERNMENT LOT 3; THE S.W. COR. OF THE NW 1/4; AND THE NW 1/4 OF THE SW 1/4 OF SAID SECTION 31; THENCE RUN N 1°04'50"W 2416.25 FEET ALONG THE WEST LINE OF SAID SECTION 31 TO A POINT; THENCE RUN N 88°58'17"E 620 FEET ALONG A LINE PARALLEL TO THE NORTH LINE OF SAID GOVERNMENT LOT 3 TO THE POINT OF BEGINNING OF THE PARCEL OF LAND HEREINAFTER DESCRIBED; THENCE RUN N 1°04'50"W 853.12 FEET ALONG A LINE PARALLEL TO THE WEST LINE OF SAID SECTION 31 TO A POINT; THENCE RUN N 89°09'38"E 807.36 FEET ALONG A LINE PARALLEL TO THE NORTH LINE OF SAID GOVERNMENT LOT 2 TO A POINT; THENCE RUN S 1°04'50"E 850.45 FEET ALONG A LINE PARALLEL TO THE WEST LINE OF SAID SECTION 31 TO A POINT; THENCE RUN S 88°58'17"W 807.35 FEET ALONG A LINE PARALLEL TO THE NORTH LINE OF SAID GOVERNMENT LOT 3 TO THE POINT OF BEGINNING; CONTAINING 15.79 ACRES MORE OR LESS.

### NOTES:

1. P.R.M. INDICATES PERMANENT REFERENCE MONUMENT.
2. B.M. REF. NGVD 1929
3. THE UTILITY EASEMENTS ARE RESERVED FOR PUBLIC UTILITIES.
4. P.O.B. INDICATES POINT OF BEGINNING.
5. P.O.C. INDICATES POINT OF COMMENCEMENT.
6. O INDICATES P.R.M.
7. B.M. INDICATES BENCH MARK.
8. D & U.E. INDICATES DRAINAGE AND UTILITY EASEMENT.
9. THIS PLAT RESTRICTED TO 5,200 SQ. FT. OF INDUSTRIAL USE. COMMERCIAL/RETAIL USES ARE NOT PERMITTED WITHOUT THE APPROVAL OF THE BOARD OF COUNTY COMMISSIONERS WHO SHALL REVIEW AND ADDRESS THESE USES FOR INCREASED IMPACTS.

### CITY COUNCIL

STATE OF FLORIDA )  
COUNTY OF BROWARD ) SS THIS IS TO CERTIFY: THAT THIS PLAT HAS BEEN APPROVED AND ACCEPTED FOR RECORD BY THE CITY COUNCIL OF THE CITY OF LAUDERHILL, FLORIDA, IN AND BY ORDINANCE DULY ADOPTED BY SAID CITY COUNCIL THIS 13 DAY OF Jan., 1986. IN WITNESS WHEREOF: THE SAID CITY COUNCIL HAS CAUSED THESE PRESENTS TO BE ATTESTED BY ITS CITY CLERK THIS 24 DAY OF Jan., 1986.

### CITY ENGINEER'S APPROVAL

THIS PLAT WAS APPROVED AND ACCEPTED FOR RECORD THIS 24 DAY OF JAN., 1986  
BY: [Signature], FLORIDA P.E. REG. NO. 21354.

### BROWARD COUNTY FINANCE AND ADMINISTRATIVE SERVICES DEPARTMENT COUNTY RECORDS DIVISION - RECORDING SECTION

THIS INSTRUMENT WAS FILED FOR RECORD THIS 16th DAY OF May, 1986, AND RECORDED IN PLAT BOOK 127, PAGE 18, RECORD VERIFIED.  
ATTEST: F. T. JOHNSON COUNTY ADMINISTRATOR BY: Carol C. Doyle DEPUTY

### BROWARD COUNTY FINANCE AND ADMINISTRATIVE SERVICES DEPARTMENT COUNTY RECORDS DIVISION - MINUTES SECTION

THIS IS TO CERTIFY THAT THIS PLAT COMPLIES WITH THE PROVISIONS OF CHAPTER 177, FLORIDA STATUTES, AND WAS ACCEPTED FOR RECORD BY THE BOARD OF COMMISSIONERS OF BROWARD COUNTY, FLORIDA, THIS 15 DAY OF APRIL, 1986.  
ATTEST: F. T. JOHNSON COUNTY ADMINISTRATOR BY: Mildred J. Cavanaugh DEPUTY  
BY: Harold C. Johnson CHAIRMAN-COUNTY COMMISSION

### BROWARD COUNTY ENGINEERING DIVISION

THIS PLAT IS APPROVED AND ACCEPTED FOR RECORD  
BY: Henry P. Cook 5-15-86 DATE DIRECTOR FLA. P.E. REG. NO. 12506  
BY: Robert L. Thompson 4-20-86 DATE PROFESSIONAL LAND SURVEYOR NO. 3869, STATE OF FLORIDA.

### BROWARD COUNTY PLANNING COUNCIL

THIS IS TO CERTIFY THAT THE BROWARD COUNTY PLANNING COUNCIL APPROVED THIS PLAT WITH REGARD TO RIGHT-OF-WAY FOR TRAFFICWAYS BY RESOLUTION.  
ADOPTED THIS 24th DAY OF January, A.D. 1986.  
John Stover 4/1/86

10. COORDINATES, AZIMUTHS AND BEARINGS SHOWN ARE REFERENCED TO STONER-KIETH RESURVEY RECORDED IN MISC. MAP BOOK 3 AT PAGE 36 OF THE PUBLIC RECORDS OF BROWARD COUNTY, FLORIDA.

### SURVEYOR'S CERTIFICATE

STATE OF FLORIDA )  
COUNTY OF BROWARD ) SS I HEREBY CERTIFY: THAT THE PLAT SHOWN HEREON IS A TRUE AND CORRECT REPRESENTATION OF A SURVEY MADE UNDER MY RESPONSIBLE DIRECTION AND SUPERVISION AND THAT SAID SURVEY IS ACCURATE TO THE BEST OF MY KNOWLEDGE AND BELIEF AND (P.R.M.'S) PERMANENT REFERENCE MONUMENTS HAVE BEEN PLACED AS REQUIRED BY LAW, AND FURTHER THAT THE SURVEY DATA COMPLIES WITH ALL THE REQUIREMENTS OF CHAPTER 177 FLORIDA STATUTES, AS AMENDED AND ORDINANCES OF BROWARD COUNTY, FLORIDA.

STROCK ENGINEERING ASSOCIATES, INC. DEERFIELD BEACH  
James F. Nash  
REGISTERED LAND SURVEYOR NO. 2264  
STATE OF FLORIDA

### DEDICATION

STATE OF GEORGIA )  
COUNTY OF FULTON ) SS KNOW ALL MEN BY THESE PRESENTS: THAT AMERICANTELEPHONE AND TELEGRAPH COMPANY, A NEW YORK CORPORATION, BY AND THROUGH A.T.&T. COMMUNICATIONS, INC., ITS DESIGNATED AGENT, OWNER OF THE LANDS DESCRIBED AND SHOWN AS INCLUDED IN THIS PLAT, HAS CAUSED SAID LANDS TO BE SUBDIVIDED AND PLATTED AS SHOWN HEREON, SAID PLAT TO BE KNOWN AS "A.T.&T. NO. 1" ALL EASEMENTS ARE HEREBY DEDICATED TO THE PERPETUAL USE OF THE PUBLIC FOR PROPER PURPOSES.

### ACKNOWLEDGEMENT

STATE OF GEORGIA )  
COUNTY OF FULTON ) SS I HEREBY CERTIFY: THAT ON THIS DAY PERSONALLY APPEARED BEFORE ME, AN OFFICER DULY AUTHORIZED BY LAW TO ADMINISTER OATHS AND TAKE ACKNOWLEDGEMENTS, R. J. Lombardi, Vice President OF A.T.&T. COMMUNICATIONS, INC. TO ME WELL KNOWN TO BE THE INDIVIDUAL DESCRIBED IN AND WHO EXECUTED THE FOREGOING DEDICATION AND HE ACKNOWLEDGED BEFORE ME THAT HE EXECUTED THE SAME FREELY AND VOLUNTARILY FOR USES AND PURPOSES THEREIN EXPRESSED.  
WITNESS: MY HAND AND OFFICIAL SEAL IN THE CITY OF ATLANTA COUNTY OF FULTON STATE OF GEORGIA THIS 17 DAY OF January, 1986.  
MY COMMISSION EXPIRES THE 3 DAY OF September, 1997.

IN WITNESS WHEREOF: I HERETO SET MY HAND AND AFFIX THE CORPORATE SEAL IN CITY OF ATLANTA COUNTY OF FULTON STATE OF GEORGIA THIS 17 DAY OF January, 1986.  
AMERICAN TELEPHONE AND TELEGRAPH COMPANY  
BY: A.T.&T. COMMUNICATIONS, INC. OFFICER: [Signature]  
WITNESS: [Signatures]  
WITNESS: [Signatures]  
WITNESS: [Signatures]

