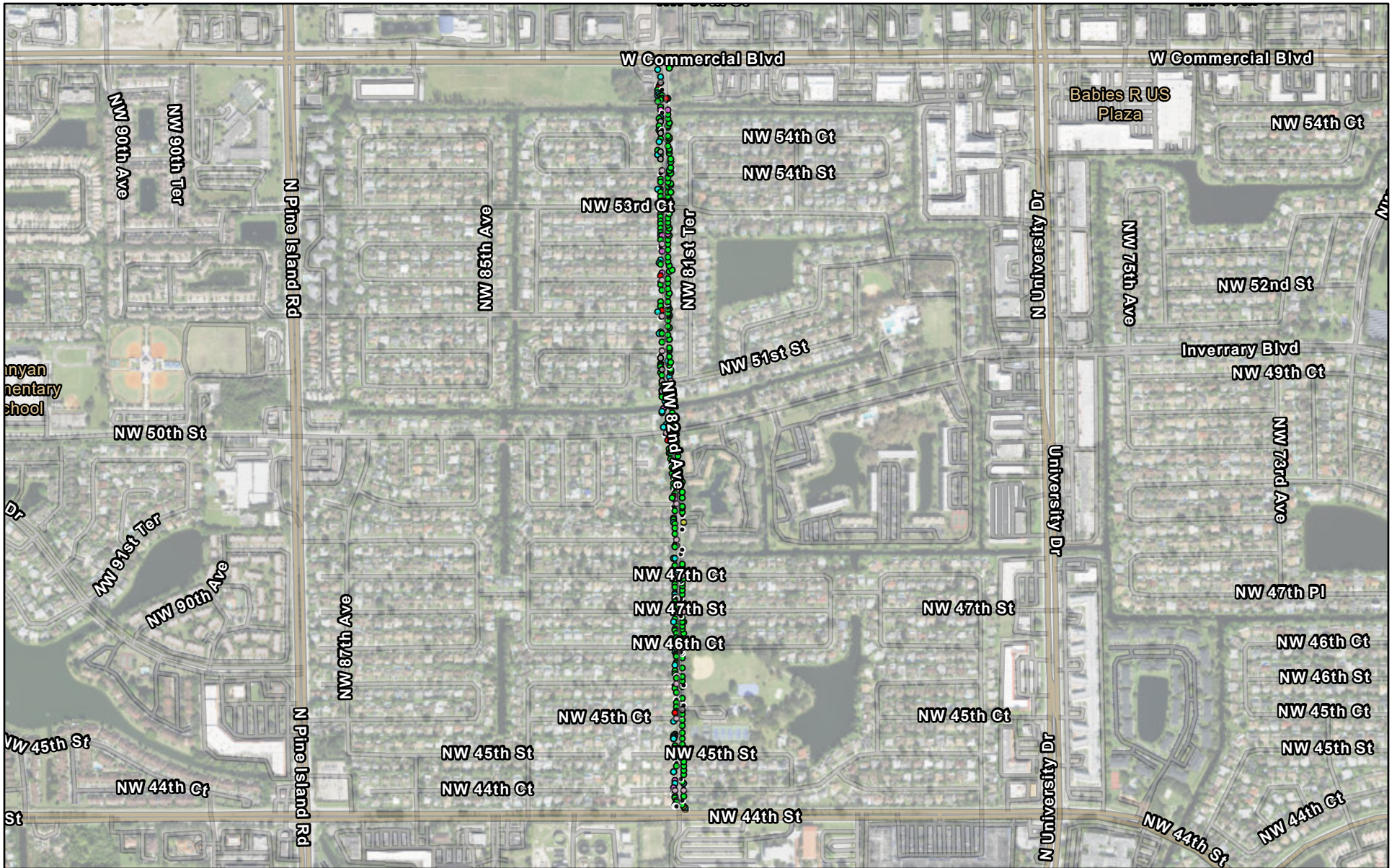


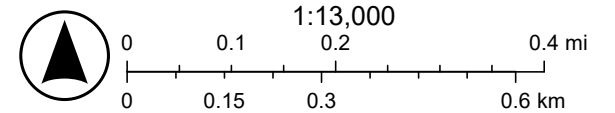
82nd Ave Shared Use Path



5/21/2026

Existing Elements - Preliminary Assessment

- | | | |
|--------------------|------------------|---------------|
| • Tree | • Sign Post | • Lightpole |
| • Utility Box/Pole | • Drainage Inlet | • Driveway |
| | • Fire Hydrant | • Side Street |



Sources: Esri, TomTom, Garmin, FAO, NOAA, USGS, (c) OpenStreetMap contributors, and the GIS User Community, State of Florida, Vantor