

AHRENS COMPANIES

1461 Kinetic Road
Lake Park, FL 33403-1911
Ph : (561) 839-2822 Fax: (561) 863-9007

Change Order

Project:
21-000018 CITY HALL ANNEX GYM - GO BOND
3300 INVERRARY BLVD
LAUDERHILL, FL 33319

Change Order: 3
Date: 11/7/2023

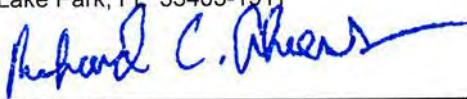
To Contractor:
AHRENS COMPANIES
1461 Kinetic Road
Lake Park, FL 33403-1911

The original Contract Amount was	\$4,531,392.28
Net change by previously authorized Change Orders	\$13,844.68
The Contract Amount prior to this Change Order was	\$4,545,236.96
The Contract will be changed by this Change Order in the amount of	\$1,114.00
The new Contract Amount including this Change Order will be	\$4,546,350.96
The Contract Time will be unchanged.	
The date of Substantial Completion as of the date of this Change Order therefore is	

NOT VALID UNTIL SIGNED BY THE CONTRACTOR AND OWNER . CHANGE REQUEST/CHANGE ORDER VOID IF NOT SIGNED WITHIN 30 DAYS

AHRENS COMPANIES
CONTRACTOR
1461 Kinetic Road
Lake Park, FL 33403-1911

OWNER



(Signature)

Richard C. Ahrens, CEO/President

By _____
11/7/2023

By

Date

Date

AHRENS COMPANIES

1461 Kinetic Road
Lake Park, FL 33403-1911
Ph : (561) 839-2822 Fax: (561) 863-9007

Change Order

Project:

21-000018 CITY HALL ANNEX GYM - GO BOND
3300 INVERRARY BLVD
LAUDERHILL, FL 33319

Change Order: 3

Date: 11/7/2023

To Contractor:

AHRENS COMPANIES
1461 Kinetic Road
Lake Park, FL 33403-1911

The Contract is changed as follows:

EXCAVATION & REMOVAL OF CONCEALED DEMOLITION DEBRIS

\$1,114.00

RECEIPT OF APPROVED CHANGE ORDER IS REQUIRED BY 011/15/23 IN ORDER FOR AHRENS COMPANIES TO ISSUE REQUIRED CHANGE ORDERS AND SCHEDULE THE WORK. ONCE THE CHANGE ORDER IS APPROVED AND RECEIVED BY AHRENS COMPANIES, THE START DATE WILL BE ESTABLISHED AND COMPLETION DAYS AS STATED BELOW . IF CHANGE ORDER IS RECEIVED AFTER THIS DATE , NOTIFICATION WILL BE PROVIDED ON POTENTIAL CONSTRUCTION SCHEDULE IMPACT AND CHARGES FOR ADDITIONAL GENERAL CONDITIONS .

THE FOLLOWING IS AN ITEMIZATION OF THE SERVICES AND EQUIPMENT REQUIRED TO PREPARE THE BUILDING 'S PAD AND FOUNDATION THAT FALLS OUTSIDE OF AHRENS SCOPE OF WORK . AS YOU KNOW THE BUILDING SITE AT ONE TIME HAD THREE LARGE COMMERCIAL BUILDINGS AND WAS IN THE PAST DEMOLISHED . THE DEMOLITION OF THESE BUILDINGS LEFT IN PLACE CONCRETE, ASPHALT , IRRIGATION LINES AND ELECTRICAL CONDUITS AWAITING OUR DISCOVERY. TO FUTURE COMPLICATE THINGS THE ELECTRICAL LINES WERE BOTH ABANDONED AND SOME ACTIVE WHICH SLOWED THE EXCAVATION AND TREE REMOVAL PROCESS .

THESE SERVICES WERE PROVIDED BY BOTH AHRENS' SITE MANAGEMENT TEAM AND THEIR SUBCONTRACTORS. THE SERVICES AND EQUIPMENT REQUIRED ARE AS FOLLOWED :

1. LOCATE AND REMOVE POWER LINES UNDER THE FUTURE BUILDINGS FOUNDATION
2. EXCAVATION AND REMOVAL OF UNDERGROUND (CONCEALED) ASPHALT PADS AND CONCRETE WALKWAYS
3. REMOVE AND RELOCATE IRRIGATION LINES .
4. LOCATE, ISOLATE AND IDENTIFY ELECTRICAL LINES SOME OF WHICH WERE STILL ACTIVE AND PRESENTED A WORKING HAZARD

AHRENS COMPANIES

1461 Kinetic Road
Lake Park, FL 33403-1911
Ph : (561) 839-2822

Change Request

To: SCOTT NEWTON
CITY OF LAUDERHILL
CITY HALL
5581 W OAKLAND PARK BLVD
LAUDERHILL, FL 33313
Ph: (954)730-3084 Fax: (954)714-4239

Number: 3
Date: 11/7/23
Job: 21-000018 CITY HALL ANNEX GYM - GO BOND
Phone:

Description: EXCAVATION & REMOVAL OF CONCEALED DEMOLITION DEBRIS

We are pleased to offer the following specifications and pricing to make the following changes:

RECEIPT OF APPROVED CHANGE ORDER IS REQUIRED BY 011/15/23 IN ORDER FOR AHRENS COMPANIES TO ISSUE REQUIRED CHANGE ORDERS AND SCHEDULE THE WORK. ONCE THE CHANGE ORDER IS APPROVED AND RECEIVED BY AHRENS COMPANIES, THE START DATE WILL BE ESTABLISHED AND COMPLETION DAYS AS STATED BELOW . IF CHANGE ORDER IS RECEIVED AFTER THIS DATE , NOTIFICATION WILL BE PROVIDED ON POTENTIAL CONSTRUCTION SCHEDULE IMPACT AND CHARGES FOR ADDITIONAL GENERAL CONDITIONS .

THE FOLLOWING IS AN ITEMIZATION OF THE SERVICES AND EQUIPMENT REQUIRED TO PREPARE THE BUILDING 'S PAD AND FOUNDATION THAT FALLS OUTSIDE OF AHRENS SCOPE OF WORK . AS YOU KNOW THE BUILDING SITE AT ONE TIME HAD THREE LARGE COMMERCIAL BUILDINGS AND WAS IN THE PAST DEMOLISHED . THE DEMOLITION OF THESE BUILDINGS LEFT IN PLACE CONCRETE, ASPHALT, IRRIGATION LINES AND ELECTRICAL CONDUITS AWAITING OUR DISCOVERY. TO FUTURE COMPLICATE THINGS THE ELECTRICAL LINES WERE BOTH ABANDONED AND SOME ACTIVE WHICH SLOWED THE EXCAVATION AND TREE REMOVAL PROCESS .

THESE SERVICES WERE PROVIDED BY BOTH AHRENS' SITE MANAGEMENT TEAM AND THEIR SUBCONTRACTORS. THE SERVICES AND EQUIPMENT REQUIRED ARE AS FOLLOVED :

1. LOCATE AND REMOVE POWER LINES UNDER THE FUTURE BUILDINGS FOUNDATION
2. EXCAVATION AND REMOVAL OF UNDERGROUND (CONCEALED) ASPHALT PADS AND CONCRETE WALKWAYS
3. REMOVE AND RELOCATE IRRIGATION LINES .
4. LOCATE, ISOLATE AND IDENTIFY ELECTRICAL LINES SOME OF WHICH WERE STILL ACTIVE AND PRESENTED A WORKING HAZARD

Description	Price
EXCAVATION & REMOVAL OF CONCEALED DEMOLITION DEBRIS	\$1,000.00
GENERAL LIABILITY 1.4%	\$14.00
AHRENS COMPANIES PROFIT 10%	\$100.00
	Subtotal: \$1,114.00
	Total: \$1,114.00

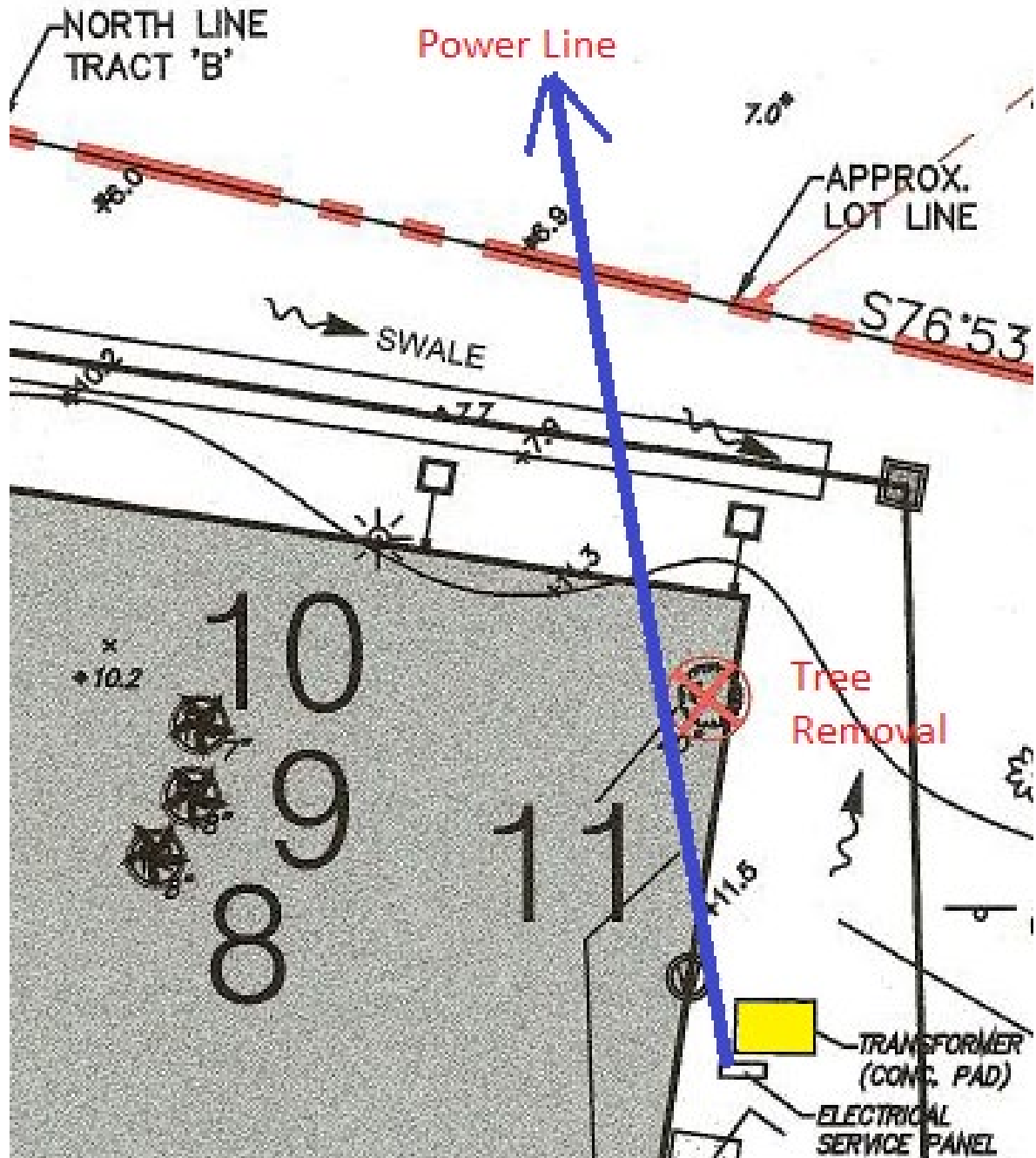
If you have any questions, please contact me at (561)863-9004.

Submitted by: SUSIE CIRILLO
AHRENS ENTERPRISES, INC.

Approved by: _____
Date: _____

Issue One: Active Electrical Line Under Future Building Pad

Location of Electrical Line – Site Plan





Red Paint Line By the Locate Service – Electrical Transformer & Panel



Stopped the Tree Removal of the final Tree



Three Seprarte meetings with FPL in order to Determine Line Output

Remobilization:

Weeks Later The Excavator was shipped Back to finish Tree Removal



Issue Three:
Removal of Irrigation & Electrical Lines

















Issue Two: Removal of Concrete Walkways and Debris



Sidewalk Removal - About 8' wide and 30' long



Sidewalk About 8' wide and 30' long Picture 2



Man Made Aerated Concrete – Part of the remaining demolition debris.



Man Made Aerated Concrete – Part of the remaining demolition debris, 2nd Picture!



Concrete and Asphalt walks and debris



Concrete and Asphalt walks and debris



Concrete and Asphalt walks and debris



Asphalt Walkway Removed

TOP SHELF EXCAVATION

Top Shelf Excavation LLC
15782 92nd Ct N
West Palm Beach, FL
33412
+561-906-2188

GENERATED FOR:
AHRENS COMPANIES
1461 KINETIC RD
WPB FL, 33403

Total Due:
\$2,000

Proposal:
LAUDERHILL CHANGE ORDER

Date:
17 OCTOBER, 2023

Items:	Total
Operations (Side walk + Asphalt DEMO)	\$1,000
Concrete/ Asphalt Haul off 2 loads @\$500	\$1,000

*****PAYMENT DUE
UPON PROJECT
COMPLETION *****

GRAND TOTAL

\$2,000

Customer Approval Signature

Date